



Installation Guide **OPOS Driver**

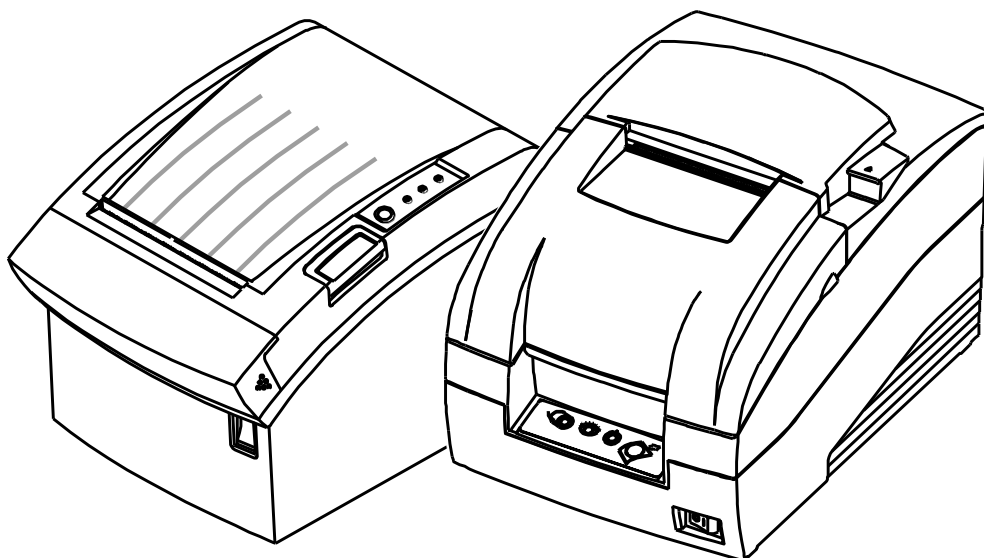
Rev. 1.03

GDP-220

GTP-250

GTP-250II

GTP-250III



<http://www.senortech.com>

■ Table of Contents

1. Instruction	3
2. Development Precondition	4
2-1 Features	4
2-2 Operating Environment.....	4
2-3 Accessible Devices	4
3. Installation	5
3-1 Installation.....	5
3-2 Uninstallation	7
4. Warning.....	8

1. Instruction

This is a manual about how to use SENOR Tech OPOS DRIVER program, installation, SENOR Tech OPOS DRIVER setup, and making application using SENOR Tech OPOS DRIVER.

SENR Tech OPOS DRIVER Setup contains software with API functions that can be used easily through OLE controls supported by Visual Basic and Visual C++ on a computer running XP/2003/Vista/Windows 2008 Server/Windows 7/Windows8 platforms.

Throughout this manual, "OLE for Retail POS" is called "OPOS".
Throughout this manual, "Unified for Retail POS" is called "UPOS".

Further Source

OLE for Retail POS committee available from <http://monroecs.com/opos.htm>

Driver Update from <http://www.senortech.com>

2. Development Precondition

2-1 Features

Through these standardized API functions, you can develop powerful, open POS systems easily.

2-2 Operating Environment

Hardware	IBM PC/AT or Compatible
Operating System	Windows XP SP3(32bit) Windows XP SP1(64bit) Windows 2003 SP1 Windows Vista / Windows 2008 Server Windows 7 / Windows 8
Hdd	Recommend 10M bytes free
Memory	Recommend 32M bytes over
Serial Ports	COM1, COM2, COM3 ... COM50
Parallel Ports	LPT1, LPT2, LPT3, LPT4
USB ports	Windows XP SP3(32bit) Windows XP SP1(64bit) Windows 2003 SP1 Windows Vista / Windows 2008 Server Windows 7 / Windows 8
Ethernet	Windows XP SP3(32bit) Windows XP SP1(64bit) Windows 2003 SP1 Windows Vista / Windows 2008 Server Windows 7 / Windows 8
Supported Languages	Microsoft Visual Basic Version 6.0 Microsoft Visual C++ Version 6.0 Power Builder / Delphi / etc..

2-3 Accessible Devices

POSPrinter

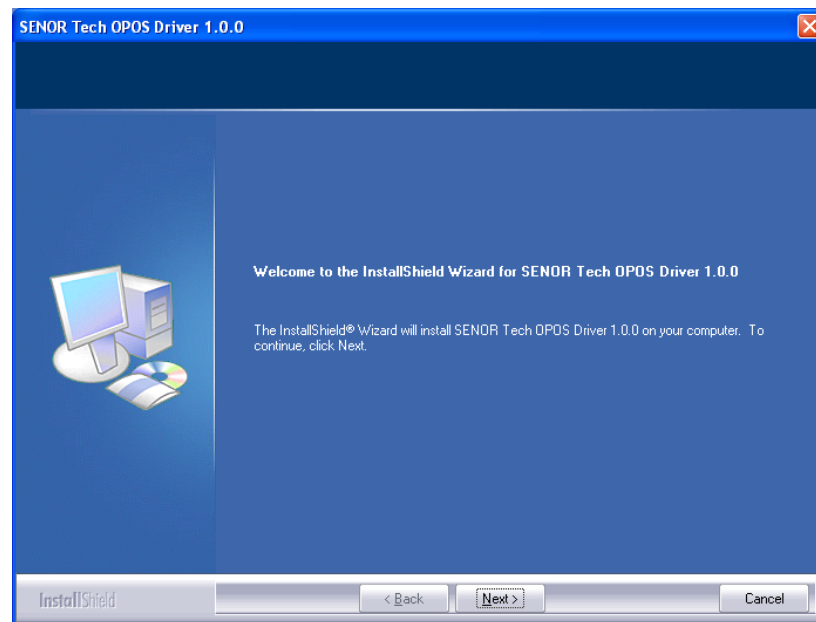
Model	Serial	PARALLEL	USB	Ethernet
GDP-220	O	O	O	O
GTP-250	O	O	O	O
GTP-250II	O	O	O	O
GTP-250III	O	O	O	O

3. Installation

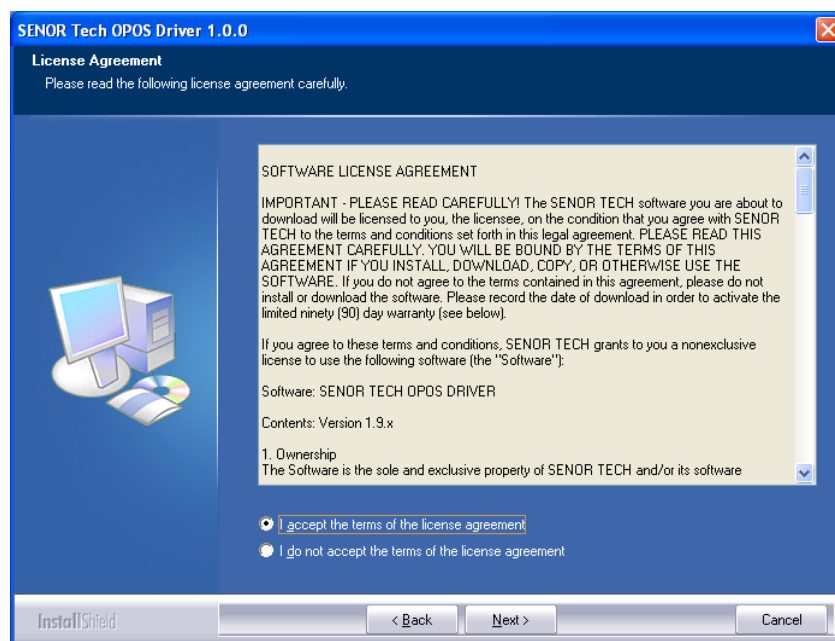
SENOR Tech OPOS DRIVER Installer is included pure OPOS Drivers (Control Object, Service Object) and 'OPOS Setup Utility' Program. But this manual, sample source are not included the installer. There are exist another folder.

3-1 Installation

- 1) Run " SENOR UPOS Driver Setup Ver1.x.x.exe"
- 2) "Welcome" dialog displayed



- 3) Accept the License agreement and Click "Next" button.



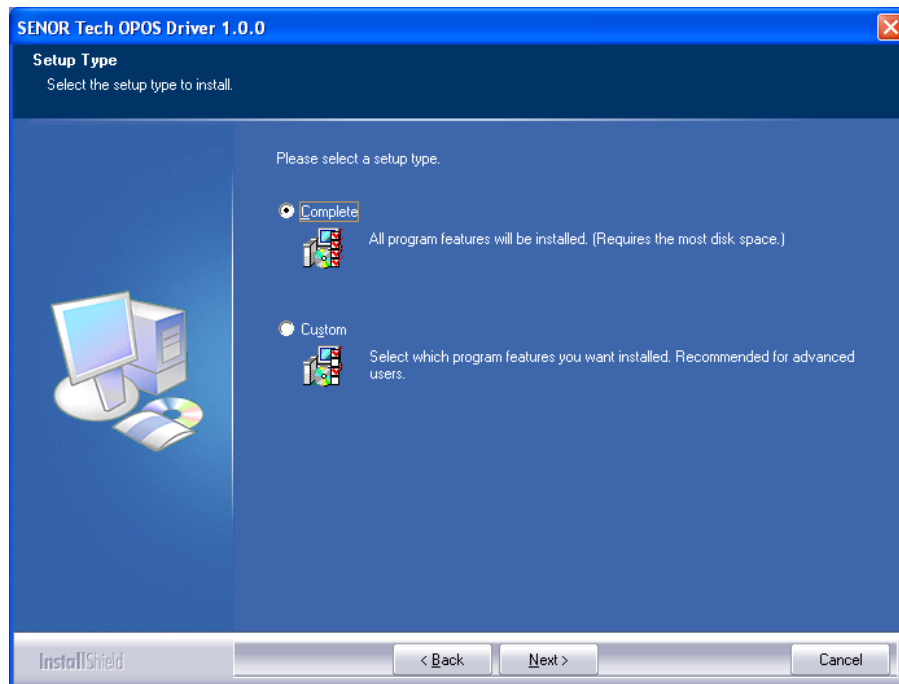
4) "Install Type" dialog is displayed.

"Choose Installation Destination" dialog box is displayed.

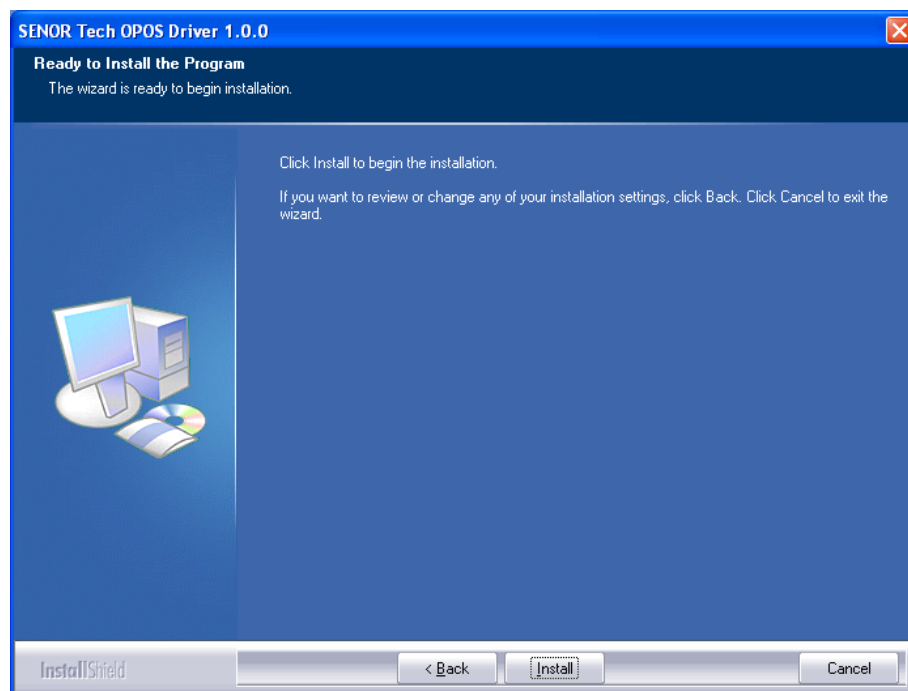
The default directory is

32bit OS : "C:\Program Files\SENROR TECH\SENROR OPOS DRIVER \"

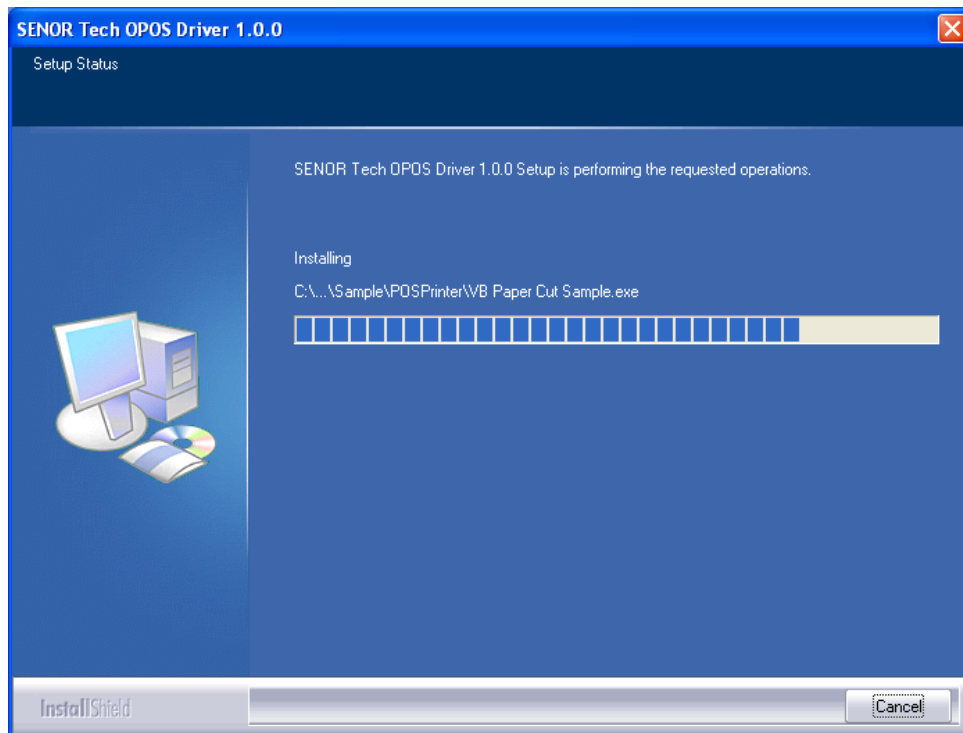
64bit OS : "C:\Program Files (x86)\SENROR TECH\SENROR OPOS DRIVER \"



5) Ready to Install.



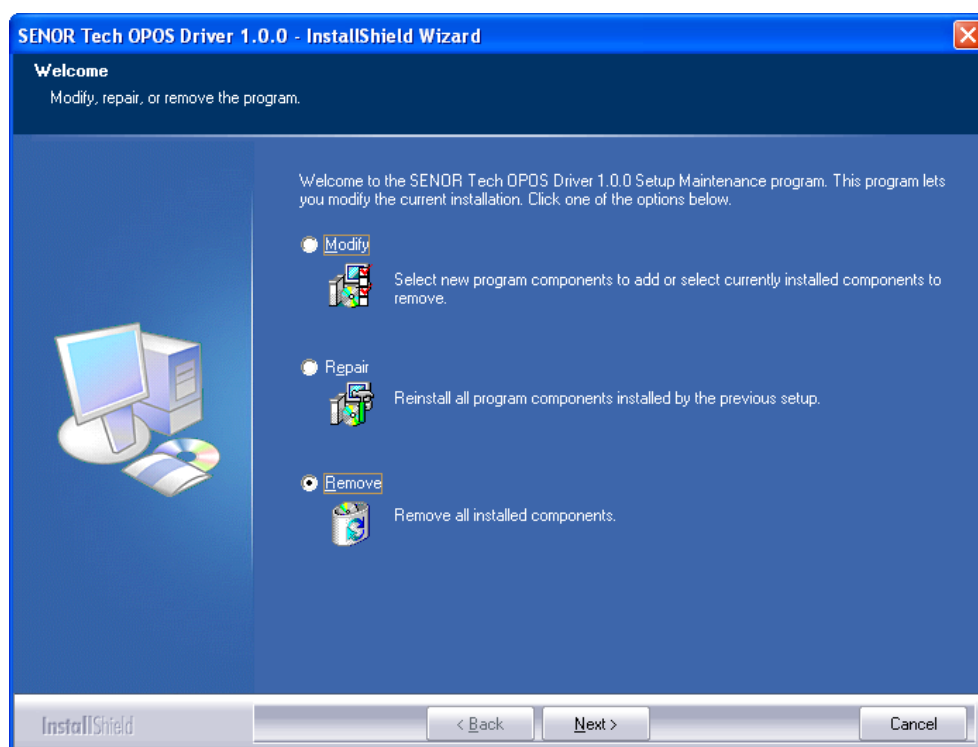
6) "Start Copying Files" dialog is displayed.



7) Installation is completed.

3-2 Uninstallation

To remove or modify SENOR Tech OPOS DRIVER, Select 'SENOR Tech OPOS DRIVER' from Add / Remove Programs in Control Panel and remove or modify.



4. Warning

- 1) SENOR Tech OPOS Driver not work properly.
If you use the OPOS driver of other manufacturers.
- 2) SENOR Tech doesn't guarantee proper operation with the POS devices of other manufacturers.